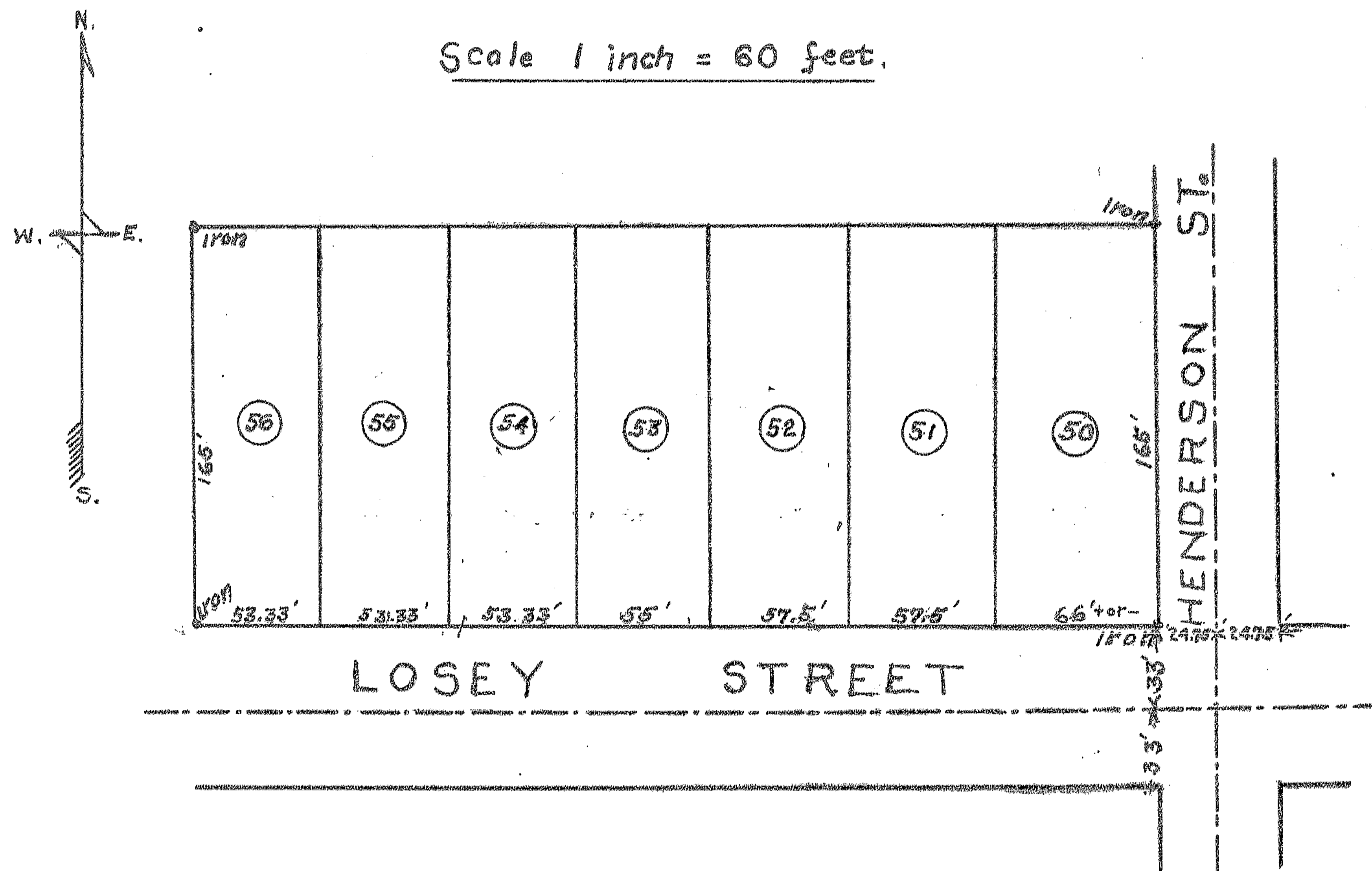
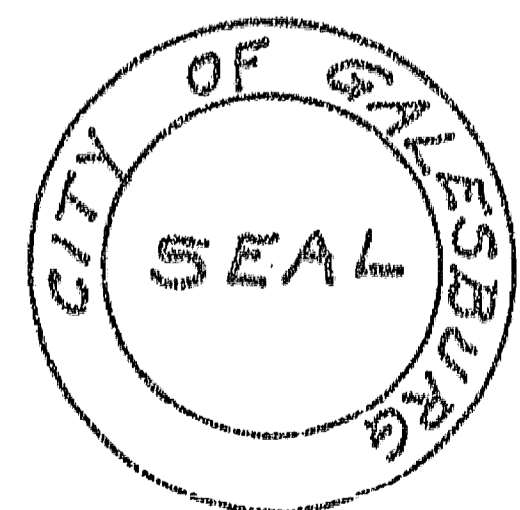


SUBDIVISION 1927

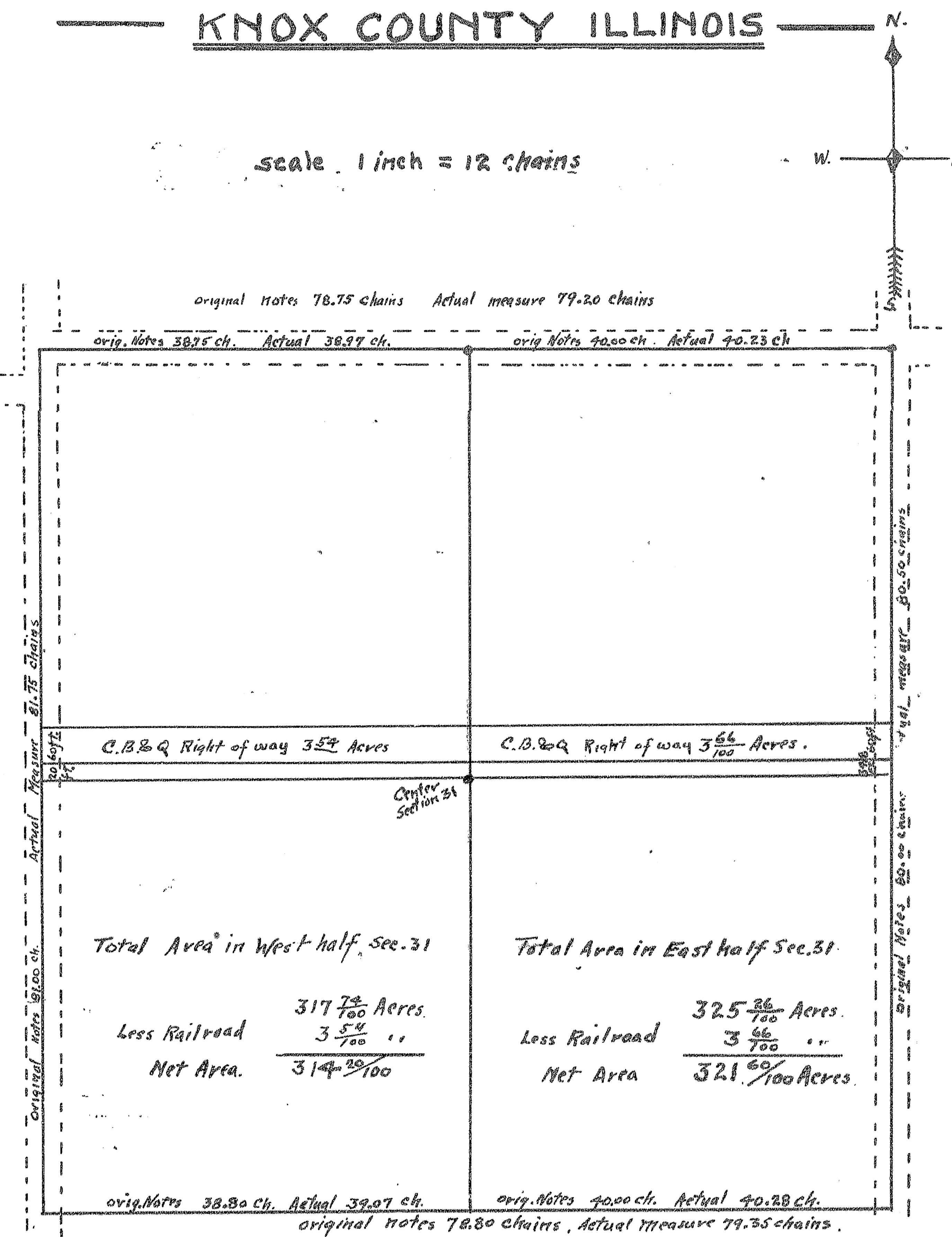
LOT 27 AND THE SOUTH 165 FEET OF LOT 28 OF SUBDIVISION 1902 OF LOTS 7 AND 8 OF R.H. WHITING'S SUBDIVISION OF THE NORTH EAST QUARTER OF SECTION 9 T. 11 N. R. 1 E. KNOX CO. ILL. IN THE CITY OF GALESBURG.



Approved Sept. 19, 1927
 Ben J. Huff, Jr.
 City Clerk



PLAT OF A SURVEY OF SECTION 31 T. 11 N. R. 1 E. OF 4TH P.M. KNOX COUNTY ILLINOIS



5333
 5333
 5333
 157.49
 55
 214.99
 198.00
 46.99

State of Illinois }
 Knox County } ss. I, hereby certify that I have surveyed Section 31 Township 11 North Range 1 East of the 4th P.M. to ascertain the area of the East half of said section 31, and the dimensions and area are as shown thereon.
 Distances are shown in chains and decimals of a chain, and measurements are made to the centers of highways where no monuments are found.
 Made July 17th 1929

Shirley S. Scott
 County Surveyor